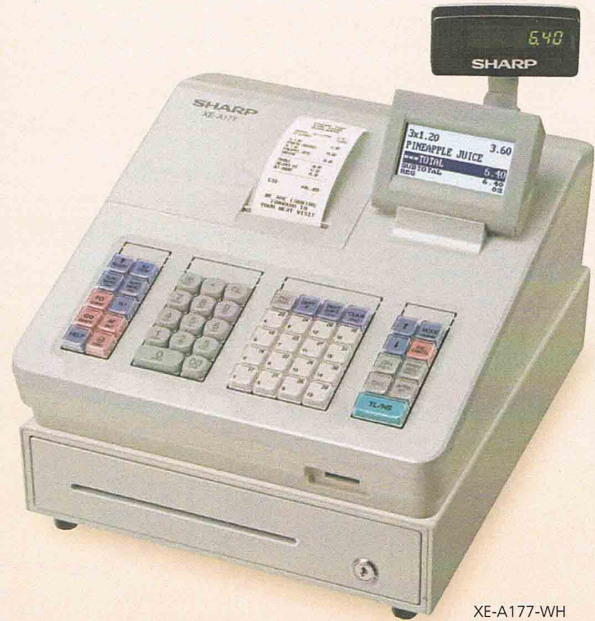


SHARP

XE-A177-WH/BK

Electronic Cash Register



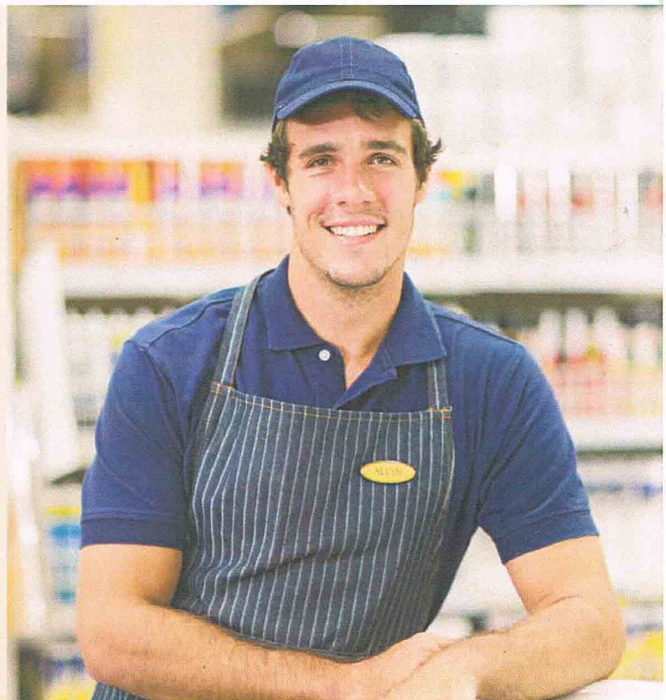
XE-A177-WH

Perfect Fit, Easy Operation, Streamlined Management

- Compact design features space-saving cash drawer
- Large, easy-to-view multi-line LCD operator display with tilt mechanism
- Built-in SD Card slot for easy sales data transfer to a PC and programme backup
- Electronic Journal stores transaction data in memory to save paper
- Quick Thermal Printer with Graphic Logo Printing
- 99 departments and up to 2,000 articles each with 16-character text



XE-A177-WH



Large Multi-Line LCD for User-Friendly Operation

The clear, backlit, 5- or 8-line*, 160 x 64-dot LCD operator display featured on the XE-A177-WH/BK provides high visibility. It can display up to 20 alphanumeric characters, allowing clerks to view items, prices, and other information even in low-light environments. And for better viewing, the operator display can be tilted anywhere from 25° to 70°. This register also features a pop-up, rotating, 7-digit LED customer display, which can be adjusted to an easy-to-read angle, ensuring customer confidence.

* Five lines for sales registration, eight lines for reporting/programming.

3x1.20	3.60
PINEAPPLE JUICE	
***TOTAL	6.40
SUBTOTAL	6.40
REG	03



Quick Thermal Printer with Graphic Logo Printing

The built-in thermal printer prints out sales receipts on 58-mm-wide paper at a speedy rate of approximately 12 lines per second. Graphic logos can be printed out as well, helping to further promote your business. Plus, the drop-in paper loading mechanism allows you to change paper rolls quickly and easily.



Quick and Accurate Price Entry

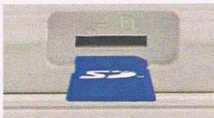
Equipped with 2,000 PLUs (price look-ups), the XE-A177-WH/BK makes entering pricing information a snap. By simply entering the code or pressing the direct keys for the items being purchased, you can total up sales with accuracy and speed. A total of 99 departments are also available, enabling you to easily track and analyse transactions by product type.

Other Key Features


- Guided programming for easy set-up
- Help key for operating instructions
- 5 automatic keys for combined report issuing
- On-screen guidance selectable in five languages (English/French/German/Spanish/Swedish)

Data Backup with SD Card Slot

The XE-A177-WH/BK is equipped with an SD card slot. SD cards (4GB to 32GB) can be used to back up various kinds of data, including daily sales and Electronic Journal data. CSV-file-type data can be saved to an SD memory card then managed on a computer via Excel or other spreadsheet applications. Also, various settings can be configured easily by using an SD card. Parameters such as the store name and logo, department names, product names, sales tax rate, and others can all be configured on a computer and imported into the register quickly and easily with an SD card.



Note: SD cards are not included. Software for importing PC-configured data into the XE-A177-WH/BK is provided. Consult your Sharp dealer for details.

 The SD logo is a trademark of the SD Card Association.

Specifications

Model	XE-A177-WH	XE-A177-BK
Display	Operator	Monochrome LCD with backlight 160 x 64 dots
	Customer	7-digit, 7-segment LED
Printer	Type	1-station, drop-in, thermal
	Digits	30 digits
	Paper width	58 mm
	Speed	Approx. 12 lines/sec.
Drawer	Bill	3 compartments
	Coin	7 compartments
Keyboard	Type	Normal key
	No. of keys	53
Interface	One RS-232 port (1 x 9-pin D-sub) One SD card slot	
Departments	Standard 99	
PLUs	Standard 2,000	
Electronic Journal	9,000 lines	
VAT/tax system	Total 4 rates	
Dimensions (W x D x H) (approx.)	345 x 390 x 335* mm	
Weight (approx.)	8 kg	

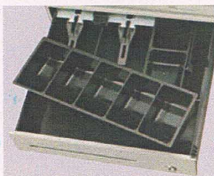
*300 mm when customer display is completely lowered
DESIGN AND SPECIFICATIONS ARE SUBJECT TO CHANGE WITHOUT PRIOR NOTICE.

Electronic Journal

The XE-A177-WH/BK features an Electronic Journal function that can store up to 9,000 lines of transaction data electronically, helping to conserve paper and reduce costs. And for easy reference, the Electronic Journal View function displays transaction data from previous entries.

Compact, High-Capacity Cash Drawer

The space-efficient metal cash drawer takes up minimal counter space yet generously provides three bill compartments and seven coin compartments. When not in use, the ruggedly built drawer can be locked shut, keeping your money safe.



Dimensions



SHARP

Distributed by:

CV. mbm

Jl. Bawean 21 Surabaya

Telp. : 031 5019050

Fax. : 031 5020083

email : info@mbmindonesia.com

Website : www.mbmindonesia.com

© SHARP CORPORATION (SEP. 2014)